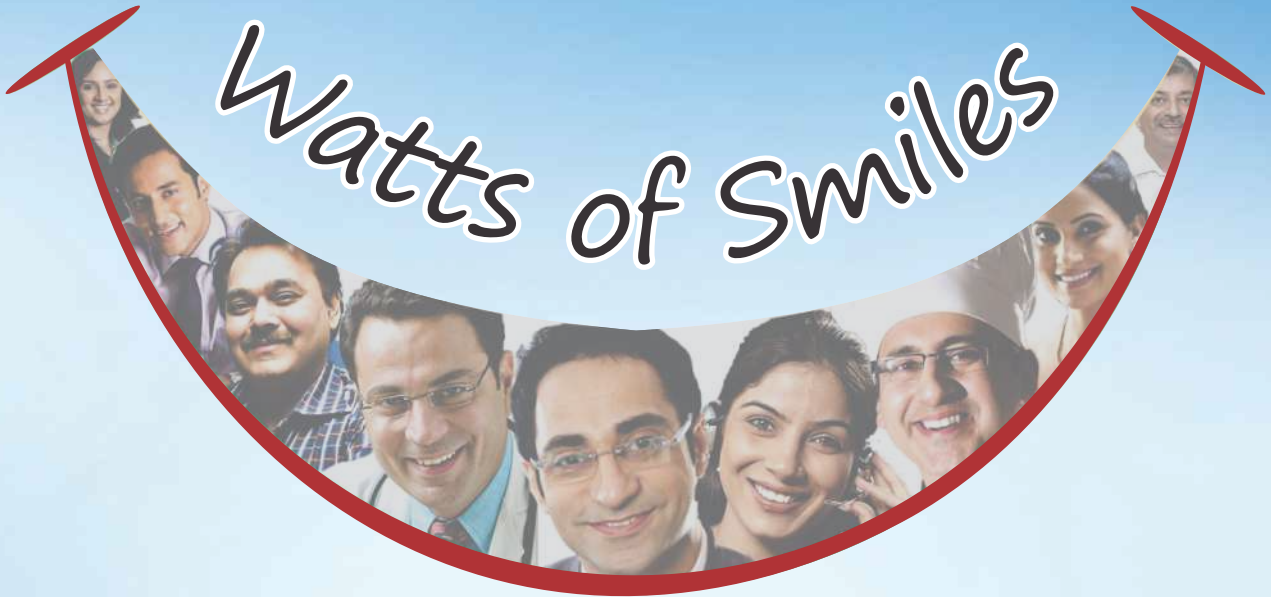


5 - 10 kVA Diesel Genset



- Compliant to revised emission norms

KOEL
CHHOTA CHILLI
BY
KIRLOSKAR

5 - 10 kVA

Prime Rating at rated rpm (as per ISO8528)		kVA	5	7.5	10
		kW	4	6	8
Genset Model			KG1-5AS	KG1-7.5AS	KG1-10AS1
Frequency		Hz	50	50	50
Power factor		lagging	0.8	0.8	0.8
Voltage		V	230 (1Ø)	230 (1Ø) & 415 (3Ø)	
Governing class (As per ISO 8528 Part-V)			G2	G2	G2
Noise level		dBA	< 75	< 75	< 75
Fuel Consumption*	At 100 % Load	Ltrs/Hr	1.6	2.3	3
	At 75 % Load		1.3	1.8	2.4
	At 50 % Load		1	1.4	1.8
Fuel tank capacity		Ltrs	70	50	50
Overall dimensions of genset (L x W x H)^		mm	1600x820x1530	1760x820x1330	1760x820x1330
Dry weight of genset with canopy (approx..)^		Kg	650	750	750
Wet weight of genset with canopy (approx..)^		Kg	700	800	800
Electrical Battery starting voltage		Volts-DC	12	12	12
ENGINE					
Engine Model			EA10 G1	EA16 G1	EA16 G1
Rated output (Prime Continuous rating as per ISO 8528-1)	kW		7.3	11.8	11.8
	HP		10	16	16
No. of cylinder	Number		1	2	2
Cubic capacity ²	Ltrs		0.95	1.56	1.56
Bore x Stroke	mm		102 x 116	95 x 110	95 x 110
Rated Speed	RPM		1500	1500	1500
Aspiration	NA/TC/TA		NA	NA	NA
Lube Oil change period	hrs.		500	500	500
Lube oil Sump Capacity	Ltrs		3.5	6.5	6.5
Coolant Capacity	Ltrs		NA	NA	NA
ALTERNATOR					
Insulation Class			Class H		
Alternator Efficiency (at 100% load) 0.8 pf**	%		78	78.1	86
Max Voltage Dip at Full Load 0.8 pf Lag	sec		≤ 20 %	≤ 20 %	≤ 20 %
Max Time to build up rated voltage at Rated RPM			< 5 sec provided engine reach the rated speed		

For intermediate ratings, kindly contact nearest KOEL office

Notes

^ Tolerances Apply

*With 0.845 Specific Gravity of diesel (5 % Tolerance)

** Efficiency of Alternator as per standards IS 4722 and IEC 34-1 For Site Conditions other than standard operating conditions consult KOEL for available prime power.

Prime rating and Stand-by rating ¹

'Prime power' is designed for Unlimited hours, as compared to 'Emergency stand-by' designed for 200 hours in a year. Prime rated Gensets also permit 10% temporary overloading. Users need to carefully select the Genset rating to meet their requirement. KOEL offers Prime power as a standard offer. Contact KOEL for stand-by ratings.

Engine capacity does matter ²

Engine capacity (cc) plays a vital role in Genset performance. Higher engine capacity leads to a robust and stable Genset performance.

Higher engine capacity also enables the Genset to respond quickly & positively to sudden load additions.

Canopy

- Ease of Access and Serviceability
- Aesthetically designed, weather and sound resistant enclosure
- Insulation conforms to UL94-HF1 class for flammability

Controller

- Microprocessor based
- Graphical LCD display
- Best in class monitoring and diagnostic Capability
- Integrable with AMF

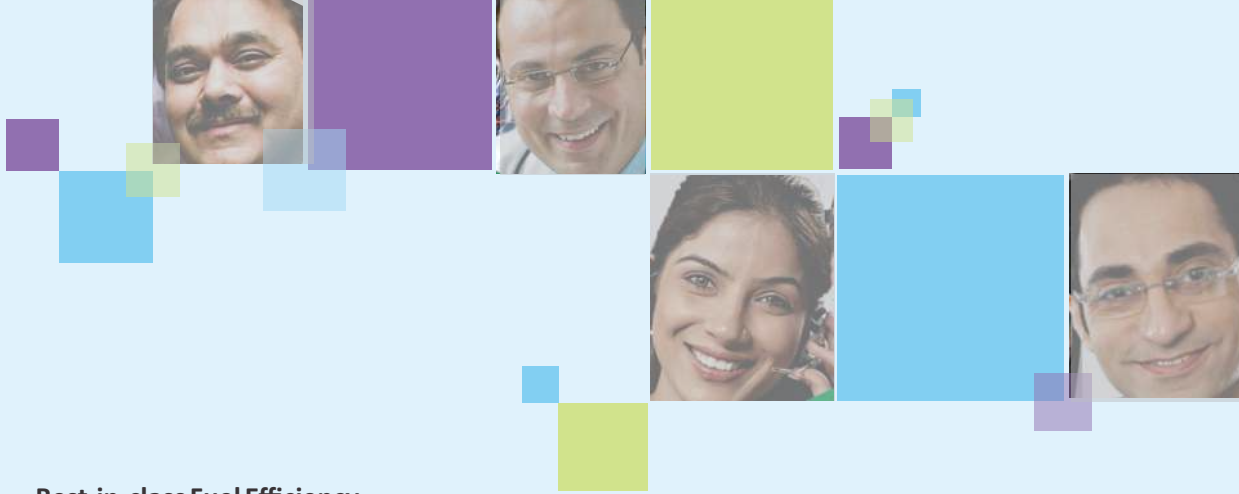


Engine

- Low emission, high efficiency engines
- Compact, Robust and Rugged Design
- 500 hours lube-oil change period

Alternator

- Best In Class Efficiency
- Special Windings to Reduce Harmonics
- Vacuum Pressure Impregnation and epoxy gel coating on the winding



Best-in-class Fuel Efficiency

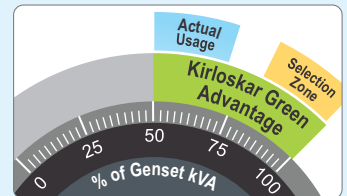
KOEL Chhota Chilli Gensets offer a unique combination of CPCB norm compliance and enhanced fuel efficiency. Across the range, KOEL

Chhota Chilli Gensets offer substantial savings in fuel cost.

O2E Series (Optimal Operating Efficiency):

Genset ratings are selected based on the present load and future expansion. Fuel efficiency of most Gensets is optimized at the full rating of the Genset.

In practice, Gensets rarely get loaded to full capacity. Power demand variations across day & night, weekdays & weekends. Summer & winter lead to an average 50-70% loading on gensets.



Considering this practical situation, KOEL has extended fuel efficiency optimization from 100%, right up to 50% of rated load. Combination of best-in-class fuel efficiency & O2E provides a double advantage- truly a **Watts of Smiles!**



Genset Controls at your finger-tips

There is no comfort like being in command. KOEL Chhota Chilli Gensets put the command in your hands. Micro-processor based Genset controllers

display a host of Genset parameters and put all controls at your fingertips.

MONITORING Features—

Phase Voltages, Phase Currents, KVA , KW , KWH , KVA_r , Power Factor Lube oil Pressure , Engine Temperature , RPM , Run Hours , Number of starts , Fuel Level Battery charge condition.

Optional features -

Common Alarm, Hooter output, Over Crank, AMF feature with ATS

DIAGNOSTIC Features—

Battery charging failure , Over /Under speed , Over Current , Over/ Under Voltage , Phase Sequencing , Phase missing Low Lube oil Pressure , High Engine Temperature, Low/High battery voltage, Low Fuel Level, Over Crank protection.

KG541 Controller



Being in control of your Genset certainly gives you.. **Watts of Smiles!**



Peace-of-mind Ownership

KOEL Chhota Chilli have always been preferred for their robust design and reliability over long usage life.

KOEL Chhota Chilli range carries the confidence of well-established and proven engine platforms. For compliance to revised CPCB norms, KOEL has carefully selected

those technologies which not only retain, but enhance Gensets durability and on-site serviceability.

Thus, KOEL Chhota Chilli Gensets offer you many years of trouble-free performance; backed by the assurance of prompt support. Peace-of-mind driven by product reliability and low cost of ownership—your **Watts of Smiles!**

The Promise Behind The Product



Enriching Lives

KOEL Chhota Chilli Brand

KOEL Chhota Chilli is the Genset brand of Kirloskar Oil Engines Ltd (KOEL), the flagship company of the century-old Kirloskar Group. KOEL also manufactures KOEL Green which is India's largest selling and most trusted Genset brand for over a decade. Providing back-up power solutions from 5 to 5200 kVA for diverse market sectors, KOEL Green and KOEL Chhota Chilli have over 1 million Gensets in service across the globe.

Research and Engineering

KOEL Chhota Chilli Gensets are designed and developed indigenously, using modern design & simulation technologies. KOEL's R&D team combines decades of application knowledge, global technology trends and emerging user expectations to develop best-in-class products for the target markets. The products are launched after extensive validation in world-class facilities.



State-of-the-art Manufacturing

KOEL Chhota Chilli Gensets are manufactured at the state-of-the-art manufacturing facilities of KOEL and authorized GOEMs across India. Common design, modern infrastructure, trained manpower, stringent process controls and standardized material quality ensure that every KCC Genset complies with the standards and meets KOEL's stringent quality norms.

Sales Network

A well-trained network of authorized KOEL Chhota Chilli Dealers and GOEM Sales teams is spread across India to serve your requirements. KOEL offices at key locations provide further techno-commercial back-up. KCC Sales teams are equipped to carry-out load study, Genset sizing and techno-commercial support. Installation and commissioning activities are also undertaken in line with KOEL's stringent guidelines.



Service Network

As Gensets cannot be driven to a Service Station, service has to come to your door-step. KOEL Chhota Chilli Gensets are supported by over 5000 trained engineers and over 450 well-equipped service outlets throughout India. Standard and custom-made maintenance packages offer a total –peace-of- mind ownership experience. Service response time and quality is centrally monitored for cross-industry benchmarking and continual improvement. Customers just need to dial our toll free number and service will be available at the door step.

7 Easy steps for a happy Genset Ownership

- Insist on a load-study
- Select the Genset rating as per the load-study and with sufficient margin for future load expansion
- Apply site-selection guidelines carefully
- Insist on installation in line with KOEL Chhota Chilli guidelines
- Ensure adequate size and proper connection of cables
- Understand the Genset operation & maintenance procedures during commissioning
- Follow routine maintenance protocols through authorized KOEL Chhota Chilli service dealers

Product improvement is a continuous process. Kindly contact KOEL for latest information

- Ahmedabad: 079 - 2692 9687/89 ● Bengaluru: 080 - 490 31130 ● Bhubaneswar: 0674 - 258 8047 ● Chennai: 044 - 237 44624 ● Delhi: 011 - 2871 5826
- Guwahati: 0361 - 245 7616 ● Indore: 0731 - 3913100 ● Jaipur: 0141 - 2370007 ● Kochi: 0484 - 238 5757 ● Kolkata: 033 - 217 0858 ● Lucknow: 0522 - 274 1442
- Ludhiana: 0161 - 254 6668 / 69 ● Meerut: 0121 - 240 1199 ● Mumbai: 022 - 6151 1234 ● Patna: 0612 - 222 0412 ● Pune: 020 - 2581 0341
- Secunderabad: 040 - 275 34176/97

KIRLOSKAR OIL ENGINES LIMITED

Laxmanrao Kirloskar Road, Khadki,
Pune 411 003 INDIA.

www.koelgreen.com



8806334433
1800 233 3344

koel.helpdesk@kirloskar.com

Stamp of
Authorised
Representative